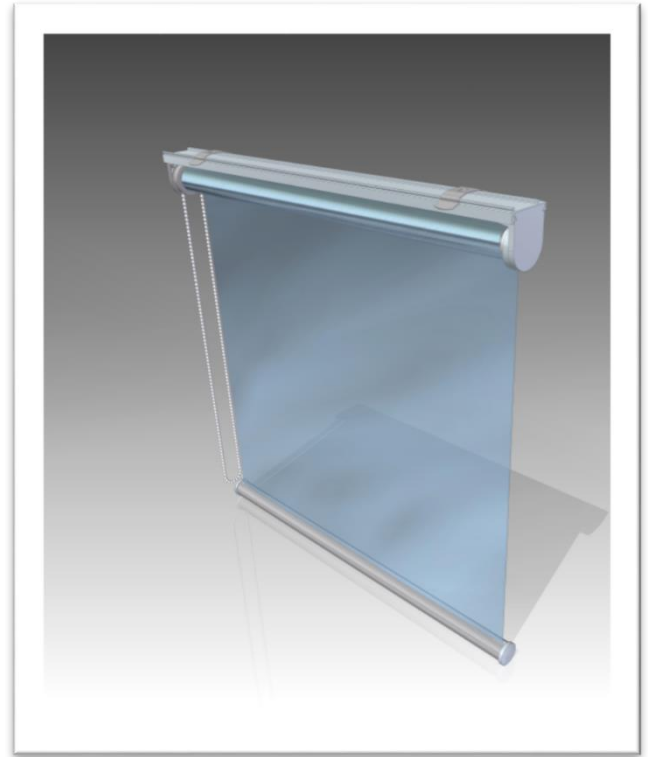


Visi-Plus Light Extra - Cord operation



Visi-Plus Light Extra - Chain operation

Datasheet

Visi-Plus Light Extra

Visi-Plus sunscreens are used for clear and safe vision in situations where sunshine and glare from outside need to be countered. Visi-Plus Light Extra is a simple solution for a standard rolling system, which is easy to install. Because a fixing strip is included, there are multiple mounting options. A Visi-Plus Light Extra screen is ready for assembly: no tensioning is needed, because this is done in the factory.

Features

- Simple solution for standard rolling system
- Several types of operations available:
 - Cord guided with a strong tension spring
 - Chain guided with a synthetic chain
 - Electrical guided with a 24Vdc tube motor or a chargeable tube motor
- Maximum width of 3,5 meters
- Maximum dropdown of 4 meters
- Two mounting brackets
- Using film with special advantages
 - Rejects up to 93% of the total solar energy
 - Gives a better view by sunny or misty weather
 - Creates daytime privacy
 - Reduce eye straining glare while maintaining the full view out
 - Stops 99% of the harmful fade-causing ultraviolet rays, protecting all interior furnishings from sun damage
 - Retains interior heat, similar to a second pane of glass
 - Reduces air conditioning costs
 - Improves living and working environmental conditions

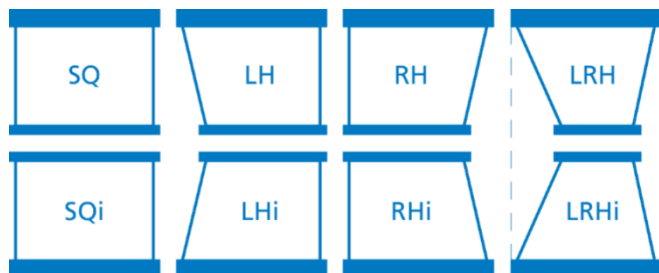
Data summary

Maximum sunscreen dimension

- Width 3500mm
- Length 4000mm

Window types

SQ, SQi, LH, LHi, RH, RHi, LRH, LRHi



Control options

All control options can be ordered left- or right side:

- Manual cord guided (CRD)
- Manual chain guided (CH)
- Electrical motor guided (ES or EB)

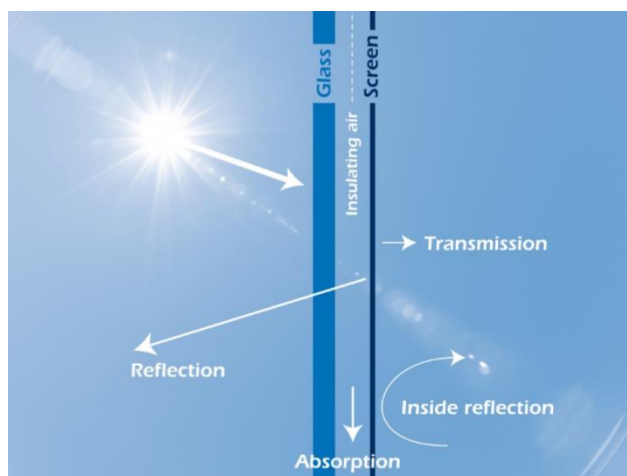
Motor specifications for electrical motor guided

- ES: Electrical Somfy 24VDC
 - 24 VDC nominal (min 20, max 27 VDC) + up, - down
 - Option: Wireless remote control
- EB: Electrical Brel chargeable
 - BLE25-1.1/MLE25-1.1 25mm 12V electronic DC radio motor with battery and USB (for 40mm tubes)
 - MLE15-0.3 8V electronic DC radio motor with battery and USB (for 27mm and 32mm tubes)

Film specifications standard VP-Grey film

- | | |
|--------------------------------|-------------|
| • Visible solar transmission | 8,0% |
| • Visible solar reflection | 11,0% |
| • Visible solar absorption | 81,0% |
| • UV transmission (300-380 nm) | <1% |
| • Total solar energy rejected | 60,2% |
| • Shading coefficient | 0,50 |
| • Film design | Three layer |

Also available: VP-Blue, VP-Bronze and VP-Silver films.
 Visi-Plus screens are manufactured with OPALFILM films.
 Most OPALFILMS are DNV-GL certified. Ask for details.



Film and screen width

- Manual cord guided (CRD) - 17mm
- Manual chain guided (CH) - 16mm
- Electrical motor guided (ES, EB) - 20mm

Sizes approx. at one side, depending on tube diameter.

Compliance

The sunscreens comply with international rules and regulations for bridge division and bridge equipment NEN and IS 8468. All sunscreens are SI approved.

Welcome to the world of Observator

Since 1924 Observator has evolved to be a trend-setting developer and supplier in a wide variety of industries. Originating from the Netherlands, Observator has grown into an internationally

oriented company with a worldwide distribution network and offices in Australia, Germany, the Netherlands, Singapore and the United Kingdom.

www.observator.com